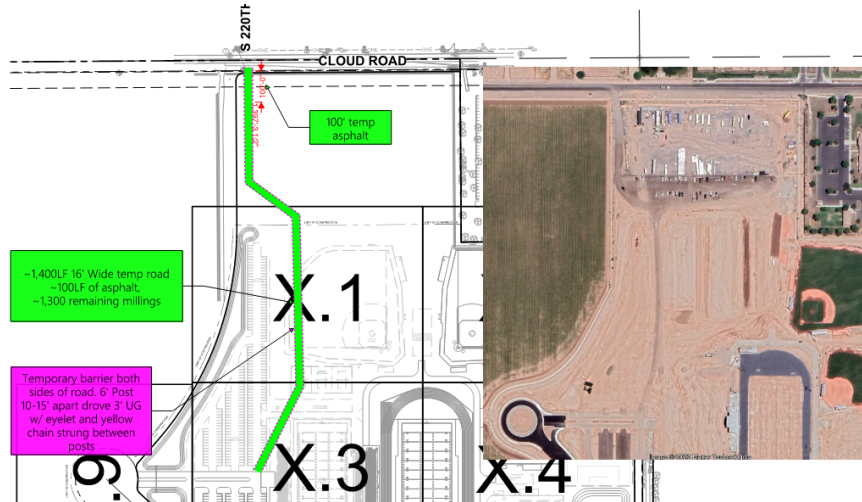


EXECUTIVE SUMMARY

Temporary Road ROM Clarifications | Crismon High School | January 31, 2023



Earthwork and Paving:

- Included:
 - 2" AC On 4" ABC (177 SY - 100' Temp AC),
 - 4" ABC/GSA (2,311 SY) at remaining road
- NOT Included:
 - Tiling of existing roads
 - Modifications to the existing road

Fencing:

- Included:
 - 2800' of 42" tall chain barrier
 - Posts pounded 30" in ground, 15' oc, with yellow chain installed in loop cap on post:



Allowances:

- Material Testing Allowance, Surveying Allowance, Striping and Signage Allowance